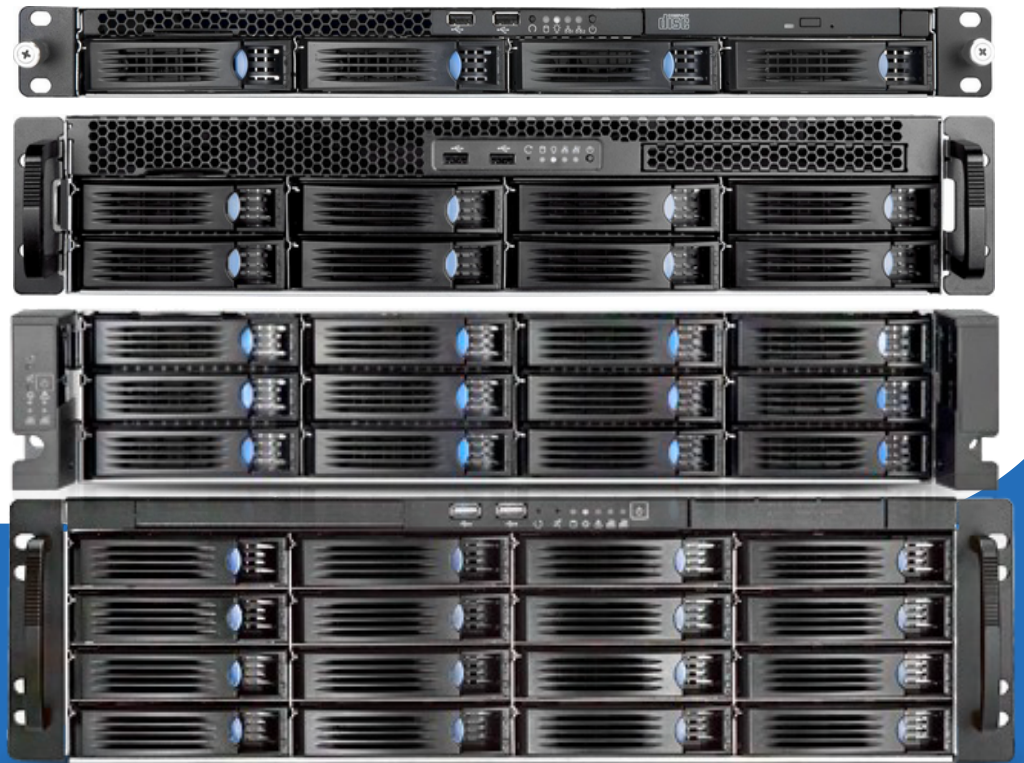


# Apogean Dual Socket Intel Xeon Scalable 2nd & 1st Gen Rackmount Server

ID41U-S2-A / ID82U-S2-A / ID122U-S2-A /  
ID163U-S2-A / ID244U-S2-A / ID242U-S2-A /  
ID364U-S2-A



## Key Features

- Dual Socket Intel Xeon Scalable 2nd & 1st Gen Processor
- 16 DIMM slots w/DDR4-2933/2666/2400 memory support
- 4 PCIe Gen. 3 x16 + 2 PCIe Gen.3 x8 slots
- 2 PCIe x8 SlimSAS connectors (NVMe)
- 1 NVMe 2280 M.2 slot
- 4 RJ45 1G LAN by Marvell 88E1543
- 1 x RJ45 Dedicated IPMI LAN port

## ID41U-S2-A / ID82U-S2-A / ID122U-S2-A / ID163U-S2-A / ID244U-S2-A / ID364U-S2-A

### Specifications:



#### • Physical Status

Form Factor Rackmount 1U/2U/3U/4U  
(As per the Drive Slots)

#### • Processor System

CPU Supports 2nd Gen. Intel® Xeon® Scalable Processors / Intel® Xeon® Scalable Processors  
Socket Dual Socket P  
Chipset Intel C621

#### • Memory

Supported DIMM Qty 16 DIMM slots  
Supported Type Quad Channel memory technology  
Support DDR4 2933/2666/2400/2133 RDIMM/LR DIMM, Intel® Optane™ DC Persistent Memory in memory mode (Cascade Lake only)  
Max. Capacity per DIMM RDIMM: 32GB, 16GB, 8GB, 4GB  
LRDIMM: 64GB, 32GB  
Memory voltage 1.2V

#### • PCIe Expansion Slots (SLOT7 close to CPU)

PCIe x16 SLOT4: PCIe3.0 x16 [CPU0]  
SLOT3: PCIe3.0 x16 [CPU1]  
SLOT2: PCIe3.0 x16 [CPU1]  
SLOT1: PCIe3.0 x16 [CPU1]  
**Note : In 1U all this slots will not be active**  
PCIe x8 SLOT6: PCIe3.0 x8 [CPU0]  
SLOT5: PCIe3.0 x8 [CPU0]  
**Note : In 1U all this slots will not be active**  
PCIe x4 NVMe: 1 x M.2 slot

#### • Other PCIe Expansion Connectors

M.2 slot (1(M key 2230/224/22260/2280, supports PCIe(x4)/SATA)  
OCuLink 3 (Slimline x8 from CPU1, Oculink x4 from CPU1)

#### • SATA/SAS Storage

Drive Slots 4 x 3.5/2.5 Drive Slots 1U Rack  
8/12 x 3.5/2.5 Drive Slots 2U Rack  
16 x 3.5/2.5 Drive Slots 3U Rack  
24 x 3.5/2.5 Drive Slots 4U Rack  
36 x 3.5/2.5 Drive Slots 4U Rack  
**Note : RAID Card is must for 12 and above drive slots SKUs.**

#### • Ethernet

Interface Gigabit LAN 1000 Mb/s  
Additional GbE Controller 4 x RJ45 GLAN by Marvell 88E1543  
1 x RJ45 Dedicated IPMI LAN port  
Supports Wake-On-LAN  
Supports Energy Efficient Ethernet 802.3az  
Supports Dual LAN with Teaming function  
Supports PXE  
LAN1 Supports NCSI

#### • Server Management

BMC Controller ASPEED AST2500: IPMI with iKVM, Media support  
IPMI Dedicated 1 x Realtek RTL8211E for dedicated management  
Features GLAN  
Watch Dog, NMI

#### • Graphics

Controller ASPEED AST2500  
VRAM DDR4 16MB

#### • Rear I/O

UID Button/LED 1 UID button w/ LED  
VGA Port 1 x D-Sub  
Serial Port 1 x COM port  
USB 3.2 Gen1 Port 4 Type A (USB3.2 Gen1)  
RJ45 4 RJ45 (1GbE)  
Dedicated LAN 1 dedicated IPMI

#### • System BIOS

BIOS Type 128Mb AMI UEFI Legal BIOS  
BIOS Features Plug and Play (PnP)  
ACPI 2.0 Compliance Wake Up Events  
SMBIOS 2.8 Support  
Instant Flash

#### • Hardware Monitor

Temperature CPU Temperature Sensing  
System Temperature Sensing  
CPU/Rear/Front Fan Tachometer  
CPU Quiet Fan (Allow Chassis Fan Speed Auto-Adjust by CPU Temperature)  
CPU/Rear/Front Fan Multi-Speed Control  
Voltage Monitoring: +12V, +5V, +3.3V, CPU Vcore, DRAM, 1.05V\_PCH, +BAT, 3VSB, 5VSB

#### • Operating System

OS Microsoft® Windows:  
Server 2012 R2, Server 2016, Server 2019, Server 2022.  
Linux:  
RedHat Enterprise Linux Server 6.8 (64 bit) / 7.4 (64 bit)  
CentOS 6.8 (64 bit) / 7.4 (64 bit)  
SUSE Enterprise Linux Server 11 SP4 (64 bit) / 12 SP3 (64 bit)  
Ubuntu 16.04 (64 bit) / 18.04 (64 bit)  
FreeBSD 11.1 (64 bit)  
Virtual:  
VMWare® ESXi 6.5 u1  
Win hyper-V Server 2012 R2

#### • Environment and Power Supply

Temperature Operation temperature: 10°C ~ 35°C / Non operation temperature: -40°C ~ 70°C  
Humidity Non-operation humidity: 20% ~ 90% (Non-condensing)  
Power Supply Single / Redundant : 500W, 800W, 1200W, 1600W, 2000W